

RTK-1010 EVK & RTK-1612 EVK

***Simple quickly complete LOCOSYS RTK Hardware settings
(Base Station & Rover)***



*Version 1.0
2021.4.09*

About LOCOSYS

LOCOSYS Technology Inc. established in 2005, a company that provide services the scope of which spans from both hardware and software in Global Navigation Satellite System (GNSS), Wireless Communication, Embedded System to Avionics, Automotive and Consumers electronics. LOCOSYS Technology Came from a well-known research organization of information industry, LOCOSYS sustains a strong R&D in Software, Hardware and system integration. Through its self own (International Automotive Task Force, IATF) IATF16949 : 2016 / ISO 9001 : 2015 certified production lines in Taiwan.

LOCOSYS is a qualified supplier to tier 1 & tier 2 manufacture in Automotive industry (design house, EMS, OEM, ODM) and be the 2017 best partner of 'Automotive Dead Reckoning' in Global automotive industry and provides solutions and services to various market segments. Stay in α-level qualified module designer and supplier in the international market, deal the partnership with more than 20 Well-known distributors overseas, to provide our customers a complete OEM and ODM services.

LOCOSYS Technology Inc.

20F.-13, No.79, Sec. 1, Xintai 5th Rd., Xizhi Dist., New Taipei City, 22101, Taiwan R.O.C.

Tel: +886-2-8698-3698

Fax: +886-2-8698-3699

Mail: info@locosystech.com

For more information about our products, please visit:

<https://www.locosystech.com/en/category/Products/index.html>

For any technical support or others, please leave a message on below website.

We will contact you directly.

<https://www.locosystech.com/en/page/Contact-Us/contact-info.html>

This document is the user guide of the EVK (Evaluation Kit)

1. Introduction to EVK

1.1 EVK Box of RTK-1010/ RTK-1612

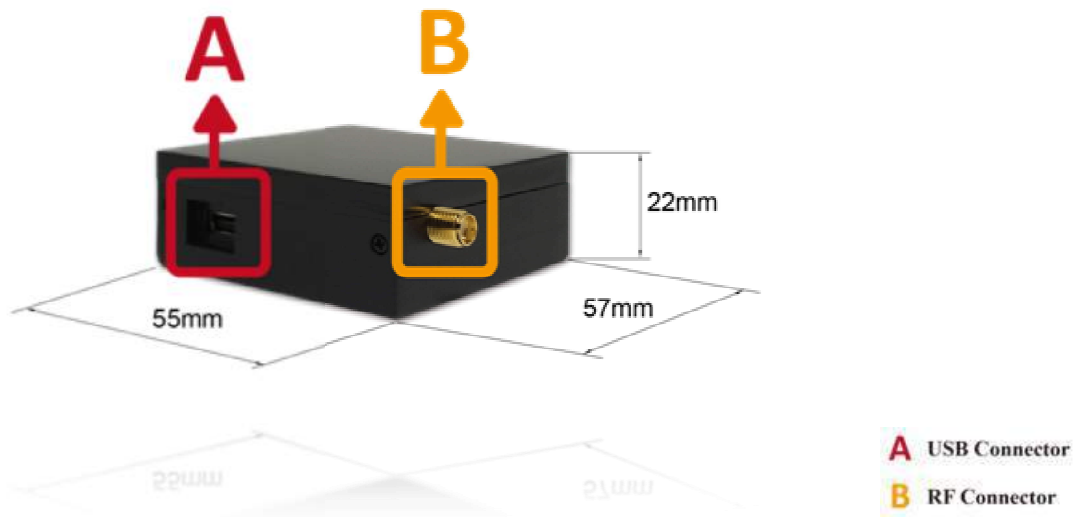


Figure 1: RTK-1010 /RTK-1612 EVK View

1.2 Accessories



Figure 2: Accessories

2. Install Device Driver

Before you connect the EVK with your computer, please check if your computer has installed a Driver already or not.

Please go to the following file path and check:

“My Computer” > “Computer Management” > “System Tools” > “Device Manager” > “Ports (COM & LPT)” > “USB-Serial Controller D”.

(Note: If your Windows OS is Windows 7, please install the Device Driver.)

If your screen is shown like below one, it means your computer has not installed the Driver yet.

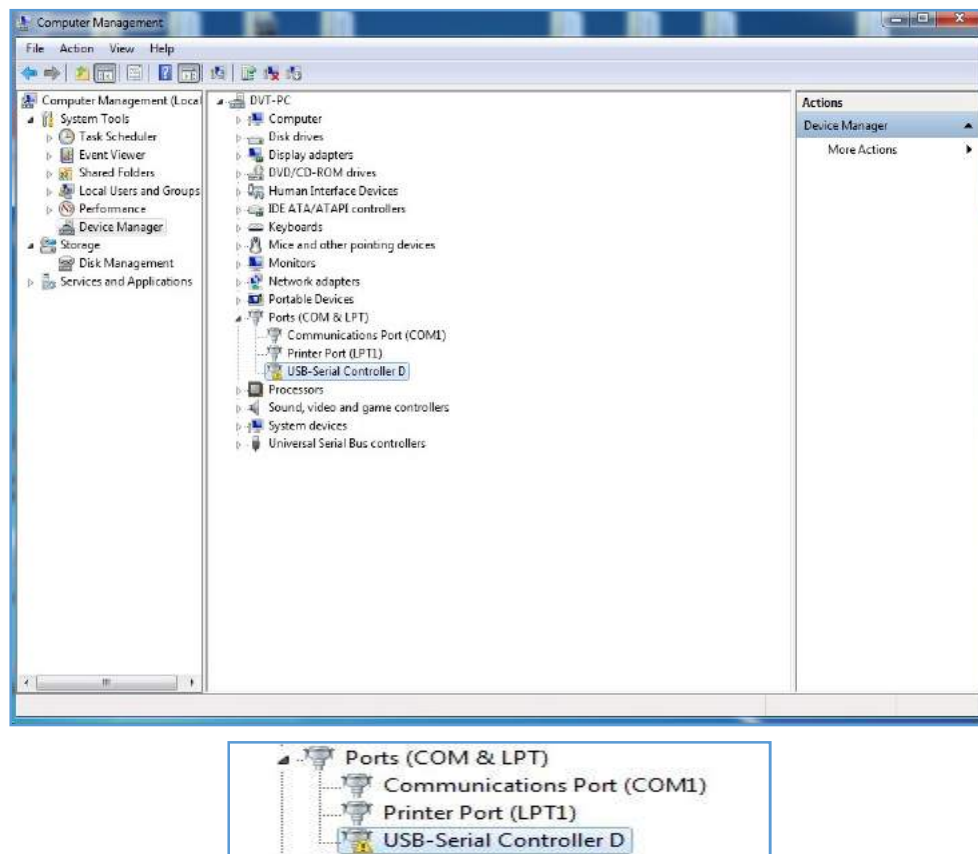


Figure 3: USB-Serial Controller D

Step 1: Please choose the Driver: “**pl2303_Prolific_DriverInstaller_v1.8.19**” and double click it, then follow up the procedures below.



Figure 4: Choose the Driver: “pl2303_Prolific_DriverInstaller_v1.8.19”

Step 2: Please press “Run”.



Figure 5: Open File - Security Warning press “Run”.

Step 3: Please press “Modify”.



Figure 6: Modify

Step 4: The Driver has been already installed on your computer.

(Note: Please restart your computer to complete the whole installation.)



Figure 7: Restart your computer to complete the whole installation

Step 5: Then you can see “Prolific USB-to-Serial Comm Port (COM3)” appears under the file path: Ports (COM & LPT) as shown below. It means you indeed install the Driver already.

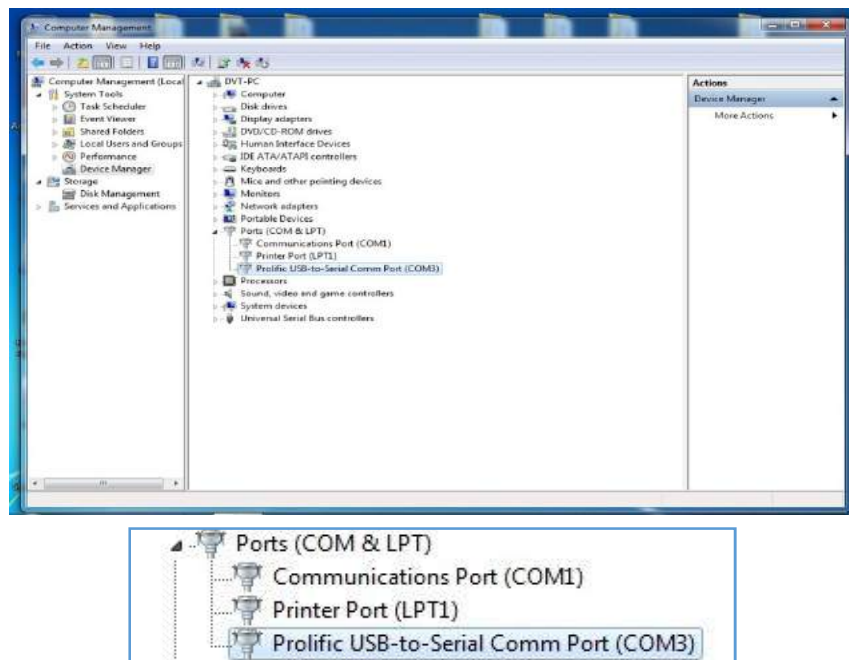


Figure 8: Appears Prolific USB-to-Serial Comm Port (COM3)